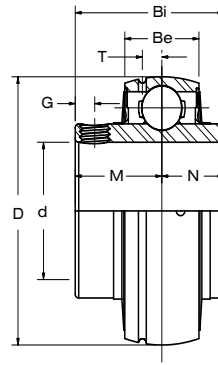




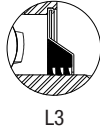
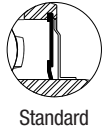
UCX 00 SERIES

Medium-Duty Ball Bearing
Setscrew Lock

TURNER
Mounted Bearings



Available Seal Styles:



Bearing Insert	Shaft Dia.	Setscrew Used	Dimensions in. mm.							Load Rating lbs. kN.		Weight
	d in. mm.	in. mm.	D	Bi	Be	N	M	G	T	Dynamic C _r	Static C _{0r}	lbs. kg.
UCX 05-14	7/8	1/4-28										
UCX 05-15	15/16	1/4-28	2.4409	1.5000	0.75480	0.6260	0.8740	0.2165	0.2087	4,377	2,569	0.9
UCX 05	25	M6 x 1	62.0	38.1	19.0	15.9	22.2	5.5	5.3	19.47	11.43	0.4
UCX 05-16	1	1/4-28										
UCX 06-18	1 1/8	5/16-24										
UCX 06	30	M8 x 1	2.8346	1.6890	0.7874	0.6890	1.0000	0.2717	0.2283	5,775	3,497	1.5
UCX 06-19	1 3/16	5/16-24	72.0	42.9	20.0	17.5	25.4	6.9	5.8	25.69	15.56	0.7
UCX 06-20	1 1/4	5/16-24										
UCX 07-22	1 3/8	5/16-24										
UCX 07	35	M8 x 1	3.1496	1.9370	0.8268	0.7480	1.1890	0.3150	0.2441	6,634	4,079	1.8
UCX 07-23	1 7/16	5/16-24	80.0	49.2	21.0	19.0	30.2	8.0	6.2	29.51	18.14	0.8
UCX 08-24	1 1/2	5/16-24										
UCX 08	40	M8 x 1	3.3465	1.9370	0.8661	0.7480	1.1890	0.3150	0.2559	7,160	4,676	2.0
UCX 09-26	1 5/8	3/8-24										
UCX 09-27	1 11/16	3/8-24	3.5433	2.0315	0.9449	0.7480	1.2835	0.3937	0.2756	7,867	5,330	2.2
UCX 09-28	1 3/4	3/8-24	90.0	51.6	24.0	19.0	32.6	10.0	7.0	35.00	23.71	1.0
UCX 09	45	M10 x 1.25										
UCX 10-30	1 7/8	3/8-24										
UCX 10-31	1 15/16	3/8-24	3.9370	2.1890	0.9843	0.8740	1.3150	0.3937	0.2913	9,743	6,608	3.0
UCX 10	50	M10 x 1.25	100.0	55.6	25.0	22.2	33.4	10.0	7.4	43.34	29.40	1.4
UCX 10-32	2	3/8-24										
UCX 11-34	2 1/8	3/8-24										
UCX 11	55	M10 x 1.25	4.3307	2.5630	1.0630	1.0000	1.5630	0.3937	0.2992	10,720	7,516	4.2
UCX 11-35	2 3/16	3/8-24	110.0	65.1	27.0	25.4	39.7	10.0	7.6	47.69	33.43	1.9
UCX 11-36	2 1/4	3/8-24										
UCX 12	60	M10 x 1.25										
UCX 12-38	2 3/8	3/8-24	4.7244	2.5630	1.1024	1.0000	1.5630	0.3937	0.3346	12,859	8,994	5.0
UCX 12-39	2 7/16	3/8-24	120.0	65.1	28.0	25.4	39.7	10.0	8.5	57.20	40.01	2.3
UCX 13-40	2 1/2	7/16-20										
UCX 13	65	M12 x 1.25	4.9213	2.9370	1.1417	1.1890	1.7480	0.4724	0.3546	13,981	9,869	5.4
UCX 13-43	2 11/16	7/16-20	125.0	74.6	29.0	30.2	44.4	12.0	8.9	62.19	43.90	2.5
UCX 14	70	M12 x 1.25	5.1181	3.0630	1.1811	1.3110	1.7520	0.4724	0.3622	14,974	10,757	5.4
UCX 14	70	M12 x 1.25	130.0	77.8	30.0	33.3	44.5	12.0	9.2	66.61	44.82	2.5
UCX 15-47	2 15/16	7/16-20										
UCX 15	75	M12 x 1.25	5.5118	3.2520	1.2992	1.3110	1.9409	0.4724	0.3740	16,325	11,992	6.8
UCX 15-48	3	7/16-20	140.0	82.6	33.0	33.3	49.3	12.0	9.5	72.62	53.35	3.1
UCX 17	85	M12 x 1.25										
UCX 17-55	3 7/16	7/16-20	6.2992	3.7795	1.4567	1.5630	2.2165	0.4724	0.4645	21,546	16,329	8.3
UCX 17-56	3 1/2	7/16-20	160.0	96.0	37.0	39.7	56.3	12.0	11.8	95.84	72.64	3.8
UCX 20	100	M16 x 1.5										
UCX 20-63	3 15/16	5/8-18	7.4800	4.6260	1.6929	1.9370	2.3740	0.7087	0.5157	29,339	23,141	10.6
UCX 20-64	4	5/8-18	190.0	117.5	43.0	49.2	60.3	18.0	13.1	130.51	102.94	4.8